



## ***Portable Generator***

**OWNER'S MANUAL**

**MODEL NO.**

**G1200**

## Congratulations on your purchase of an All Power™ G1200 Generator!

All Power™ designs and builds generators with the consumer in mind. With proper use and maintenance, this generator will bring years of service. This 'Owner's Manual' will provide you with a good basic understanding of the operation and maintenance of this machine. **Every effort has been made to ensure the accuracy and completeness of the information in this package. We reserve the right to change, alter and/or improve the product and this document at any time without prior notice.**

### Copyright and Compliance Statements

© 2014, Jiang Dong North America and All -Power America are copy written by Chong Qing Dajiang Power Equipment Co. Ltd.

UNITED STATES ENVIRONMENTAL PROTECTION AGENCY, WASHINGTON, DC 20460

### 2014 Model Year Certificate of Conformity:

Manufacturer: Chong Qing Dajiang Power Equipment Co. Ltd.  
Certificate Number: CDP-NR51-06-02  
Effective Date: 12/30/2014  
Date Issued: 12/30/2014

Merrilyn Zaw-Mon, Director, Compliance and Innovation Strategies Division, Office of Transportation and Air Quality. Pursuant to Section 213 of Clean Air Act (42 U.S.C. Section 7547) and 40 CFR 90, and subject to the terms and conditions prescribed in those provisions, this certificate of conformity is hereby issued for the following small non-road engine family, more fully described in the documentation required by 40 CFR 90 and produced in the stated model year.

This certificate of conformity covers only those new small non-road engines which conform in all material respects to the design specifications described in the documentation required by 40 CFR 90 and which are produced during the model year stated on this certificate.

This certificate of conformity does not cover small non-road engines imported prior to the

effective date of the certificate. SMALL NON-ROAD ENGINE FAMILY: 6CDPS

This certificate of conformity is conditional upon compliance of said manufacturer with the averaging, banking, and trading provisions of 40 CFR Part 90, Subpart C both during and after model year production. Failure to comply with these provisions may render this certificate void ab initio. The HC + NOX family emission limit (FEL) is: g/k W-hr.

It is a term of this certificate that the manufacturer shall consent to all inspections described in 40 CFR 90.126 and 90.506 and authorized in a warrant or court order. Failure to comply with the requirements of such a warrant or court order may lead to revocation or suspension of this certificate for reasons specified in 40 CFR 90. It is also a term of this certificate that this certificate may be revoked or suspended or rendered void ab initio for other reasons specified in 40 CFR 90.

This certificate does not cover small non-road engines sold, offered for sale, or introduced, or delivered for introduction, into commerce in the U.S. prior to the effective date of the certificate.

**WARNING! PLEASE READ AND UNDERSTAND ALL SAFETY PRECAUTIONS IN THIS MANUAL BEFORE OPERATING. FAILURE TO COMPLY WITH INSTRUCTIONS IN THIS MANUAL COULD RESULT IN PERSONAL INJURY, PROPERTY DAMAGE, AND/OR VOIDING OF YOUR WARRANTY. ALL POWER AMERICA WILL NOT BE LIABLE FOR ANY DAMAGE BECAUSE OF FAILURE TO FOLLOW THESE INSTRUCTIONS.**

## IMPORTANT INFORMATION

This manual contains important notations that you need to know and understand to protect YOUR SAFETY and to PREVENT EQUIPMENT PROBLEMS.



This is a safety alert symbol. This is used to alert you to potential personal injury hazard. Obey all safety messages that follow this symbol to avoid possible injury or death.

## ⚠ WARNING ⚠

A **WARNING** indicates a hazardous situation which, if not avoided, could result in death or serious injury.



A **NOTE** indicates special precautions that must be taken to avoid damage to the machine or other property.

**READ AND UNDERSTAND ALL SAFETY PRECAUTIONS IN THIS MANUAL BEFORE OPERATING. FAILURE TO COMPLY WITH INSTRUCTIONS IN THIS MANUAL COULD RESULT IN PERSONAL INJURY, PROPERTY DAMAGE, AND/OR VOIDING YOUR WARRANTY. ALLPOWER™ AMERICA WILL NOT BE LIABLE FOR ANY DAMAGE DUE TO FAILURE OF COMPLYING THESE INSTRUCTIONS.**

<b>SAFETY INFORMATION .....</b>	<b>4</b>
Carbon Monoxide .....	4
Gasoline And Oil .....	4
Power Output.....	5
Work Area.....	5
Electrical Safety .....	5 - 6
Personal Safety.....	6 - 7
General Use And Care .....	7
Servicing .....	7
Heart Pacemakers .....	7
Installation .....	7 - 8
Mechanical .....	8 - 9
Chemicals .....	9
Noise .....	9
Electric Shock Prevention.....	9
Extension Cord.....	9
<b>COMPONENTS.....</b>	<b>10</b>
<b>CONTROL PANEL.....</b>	<b>10</b>
<b>ASSEMBLY .....</b>	<b>11</b>
Removing the Generator.....	11
Parts Included.....	11
<b>PRE-OPERATION .....</b>	<b>11</b>
Add Engine Oil .....	11
Add Fuel.....	11 - 12
Grounding .....	12
Pre-Operation Check .....	12

<b>OPERATION.....</b>	<b>13</b>
Starting the Engine .....	13
Stopping the Engine .....	13
Powering 120 Volt AC Tool And Equipment.....	14
Powering 120 Volt DC Tool And Equipment.....	14
<b>MAINTENANCE.....</b>	<b>15</b>
Periodic Maintenance Chart.....	15
Inspection, Cleaning and Maintenance.....	16
Servicing The Spark Plug.....	16
Servicing The Muffler .....	16
Checking/Replacing the Oil .....	17
Servicing The Air Filter.....	17
Storing The Generator .....	18
Installation .....	18
<b>TROUBLESHOOTING YOUR GENERATOR.....</b>	<b>19</b>
Troubleshooting Guide.....	19
<b>SPECIFICATIONS .....</b>	<b>20</b>
Specifications Table.....	20
<b>NOTES .....</b>	<b>21</b>
<b>PARTS LIST .....</b>	<b>22 - 35</b>
<b>NOTES.....</b>	<b>36 - 37</b>
<b>CONSUMER INFORMATION .....</b>	<b>38</b>
Identification Number Records .....	38
<b>LIMITED WARRANTY .....</b>	<b>39</b>

### SAVE THESE IMPORTANT SAFETY INSTRUCTIONS!

- Read and follow all Labels and the Owner's Manual carefully.
- Keep children away.
- See Owner's Manual for meaning of safety symbols and complete safety instructions.

### CARBON MONOXIDE

- Generator exhaust contains carbon monoxide. This is a poison you cannot see or smell.
- NEVER use inside a home or garage, EVEN IF doors and windows are open.
- Only use OUTSIDE and far away from windows, doors and vents.

#### **⚠ WARNING ⚠**

The exhaust contains poisonous carbon monoxide gas that can cause loss of consciousness and may lead to death.

### GASOLINE AND OIL

This product requires oil and fuel. Attempting to start the engine without oil will ruin the



This is a safety alert symbol. This is used to alert you to potential personal injury hazard. Obey all safety messages that follow this symbol to avoid possible injury or death.

#### **⚠ WARNING ⚠**

A **WARNING** indicates a hazardous situation which, if not avoided, could result in death or serious injury.

#### **⚠ CAUTION ⚠**

A **CAUTION** indicates a possibility of equipment damage if instructions are not followed.



A **NOTE** indicates special precautions that must be taken to avoid damage to the machine or other property.

engine and void the warranty. Please work in a well-ventilated area. Keep cigarettes, flames or sparks away from the work area or where gasoline is stored.

- Do not smoke, or allow sparks, flames or other sources of ignition around the engine and fuel tank. Fuel vapors are explosive.
- Keep grounded conductive objects, such as tools, away from exposed, live electrical parts and connections to avoid sparking or arcing. These events could ignite fumes or vapors.
- Do not refill the fuel tank while the engine is running or while the engine is still hot.

- Do not operate the generator with known leaks in the fuel system.
- Excessive buildup of unburned fuel gases in the exhaust system can create a potentially explosive condition. This buildup can occur after repeated failed start attempts, valve testing, or hot engine shutdown. If this occurs, open exhaust system drain plugs, if equipped, and allow the gases to dissipate before attempting to restart the generator.
- Use only engine manufacturer recommended fuel and oil.

#### **⚠ WARNING ⚠**

Gasoline is extremely flammable and is explosive under certain conditions. Keep out of reach of children.

**POWER OUTPUT**

This generator is not designed to power sensitive electronic equipment (including computers and medical devices) without the addition of an approved line conditioner, which is sold separately.

**⚠ CAUTION ⚠**

Attempting to power sensitive electronic equipment without the use of an approved line conditioner may cause damage to the equipment.

**ALL POWER AMERICA IS NOT RESPONSIBLE FOR ANY DIRECT OR INDIRECT DAMAGE CAUSED BY FAILURE TO USE AN APPROVED LINE CONDITIONER.**

**WORK AREA**

- Keep your work area clean and well lit. Cluttered benches and dark areas invite accidents.
- Do not operate power tools in explosive atmospheres, such as in the presence of flammable liquids, gases, or dust.

Generators create sparks which may ignite the dust or fumes.

- Keep bystanders, children, and visitors away while operating a generator. Provide barriers or shields as needed.

**ELECTRICAL SAFETY**

- Grounded tools must be plugged into an outlet properly installed and grounded in accordance with all codes and ordinances. Never remove the grounding prong or modify the plug in any way. Do not use any adapter plugs.
- Grounding provides a low-resistance path to carry electricity away from the user in the event of an electrical malfunction.



**Double-insulated tools are equipped with a polarized plug where one blade is wider than the other. This plug fits in a polarized outlet only one way. If the plug does not fit fully in the outlet, reverse the plug. If it still does not fit, contact a qualified electrician to install a polarized outlet.**

**Do not change the plug in any way. Double-insulation eliminates the need for the three-wire grounded power cord and grounded power supply system.**

- Avoid body contact with grounded surfaces such as pipes, radiators, ranges, and refrigerators. There is an increased risk of electric shock if your body is grounded.
- Do not expose generator to rain or wet conditions. Water entering a generator will increase the risk of electric shock.
- Do not abuse the power cord. Keep power cords away from heat, oil, sharp edges, or moving parts. Replace damaged power cords immediately. Damaged power cords increase the risk of electric shock.
- When operating a power tool outside, use an outdoor extension cord marked "W-A" or "W". These extension cords are rated for outdoor use, and reduce the risk of electric shock.

### ELECTRICAL SAFETY (cont'd)

- All connections and conduits from the generator to the load must only be installed by trained and licensed electricians, and in compliance with all relevant local, state, and federal electrical codes and standards, and other regulations where applicable.
- The generator must be earth-grounded for fixed installations in accordance with all relevant electrical codes and standards before operation.
- Do not attempt to connect or disconnect load connections while standing in water, or on wet or soggy ground.
- Do not touch electrically energized parts of the generator and interconnecting cables or conductors with any part of the body, or with any non-insulated conductive object.
- Connect the generator only to a load or electrical system (120 volt) that is compatible with the electrical characteristics and rated capacities of the generator.
- Before servicing equipment powered by the generator, disconnect the equipment from its power input.
- Keep all electrical equipment clean and dry. Replace any wiring where the insulation is cracked, cut abraded or otherwise degraded. Replace terminals that are worn, discolored, or corroded. Keep terminals clean and tight.
- Insulate all connections and disconnected wires.
- Guard against electric shock. Prevent body contact with grounded surfaces such as pipes, radiators, ranges, and refrigerator enclosures.

### PERSONAL SAFETY

- Dress properly. Do not wear loose clothing or jewelry. Contain long hair. Keep your hair, clothing, and gloves away from moving parts. Loose clothes, jewelry, or long hair can be caught in moving parts.
- Avoid accidental starting. Make sure the power switch is in its OFF position, and disconnect the spark plug wire when not in use.
- Remove adjusting keys or wrenches before turning the generator on. A wrench or a key that is left attached to a rotating part of the generator may result in personal injury.
- Do not overreach. Keep proper footing and balance at all times.
- Use safety equipment. Always wear eye protection. Wear ANSI approved safety impact eye goggles. Dust mask, non-skid safety shoes, hard hat, or hearing protection must be used for appropriate conditions.
- Do not force the generator. Use the correct generator for your application. The correct generator will do the job better and safer at the rate for which it is designed.

- Do not use the generator if the power switch does not turn it on or off. Any generator that cannot be controlled with the power switch is dangerous and must be replaced or repaired.

## GENERAL USE AND CARE

- Make sure the power switch is in its OFF position and disconnect the spark plug wire before making any adjustment, changing accessories, or storing the generator. Such preventive safety measures reduce the risk of starting the generator accidentally.
- Store idle generators out of reach of children and other untrained persons. Generators are dangerous in the hands of untrained users.
- Maintain generators with care. Do not use damaged generator. Tag damaged generators "Do not use" until repaired.
- Check for misalignment or binding of moving parts, breakage of parts, and any

other condition that may affect the generator's operation. If damaged, have the generator serviced before using. Many accidents are caused by poorly maintained generators.

- Use only accessories that are recommended by the manufacturer for your model. Accessories that may be suitable for one generator may become hazardous when used on another generator.

## SERVICING

- Maintain labels and name plates on the generator and engine. These carry important information. If unreadable or missing, contact All Power immediately for a replacement.
- Generator service must be performed only qualified repair personnel. Service or maintenance performed by unqualified personnel could result in a risk of injury.

- When servicing a generator, use only identical replacement parts. Follow all appropriate instructions in this manual. Use of unauthorized parts or failure to follow maintenance instructions may create a risk of electric shock or injury.

## HEART PACEMAKERS

### ⚠ WARNING ⚠

**People with pacemakers should consult their physician(s) before using this product. Electromagnetic fields in close proximity to a heart pacemaker could cause interference to or failure of the pacemaker.**

## INSTALLATION

- Ensure installation meets all applicable safety, and local and national electrical codes. Have installation performed by a qualified, licensed electrician and building contractor.

- All electrical work, including the earth-ground connection, should be completed by a licensed electrician.
- Any separate fuel storage or generator supply facility must be built or installed in full compliance with all relevant local, state, and federal regulations.
- If the generator is installed outdoors, it must be weatherproofed and should be soundproofed. It should not be run outdoors without protection to the generator and wiring conduit.
- The generator weighs 100 lbs. (approx.). Two or more people should assist when moving or lifting this product. Never lift the generator using the engine or alternator lifting lugs. Connect lifting equipment to the frame of the generator.
- Before lifting the generator, ensure the lift rigging and supporting structure are in good condition, and are rated to lift such a load.

- Keep all personnel away from the suspended generator during relocating.
- The supporting floor/ground surface should be level and strong enough to safely hold the weight of the generator. If the floor/grounded surface is not level, strong cross members should be placed under the full length of the generator frame at its low side.
- For trailer installation, the generator should be mounted on the center point of the trailer, over the wheels. The trailer must be capable of supporting the weight of the generator and all contents (tools, etc.).
- Install sound-and weather-proofing only when it is not raining or snowing to avoid trapping moisture within the generator's area.

### MECHANICAL

- Always make sure the power switch is in its OFF position. Disconnect the spark plug wire, and allow the engine to

completely cool before carrying out maintenance.

- Check for damaged parts. Before using the generator, any part that appears damaged should be carefully checked to determine that it will operate properly and perform its intended function.
- Check for alignment and binding of moving parts, any broken parts or mounting fixtures, and any other condition that may affect proper operation technician.
- The generator is designed with guards for protection from moving parts. In any case, care must still be taken to protect personnel and equipment from other mechanical hazards when working around the generator.
- Do not operate the generator with safety guards removed. While the generator is running, do not attempt to reach around the safety guard for maintenance or any other reason.



- Keep hands, arms, long hair, loose clothing, and jewelry away from moving parts. Be aware that when engine parts are moving fast they cannot be seen clearly.
- Keep access doors on enclosures closed and locked when access is not required.
- When working on or around the generator always wear protective clothing including ANSI approved safety gloves, safety eye goggles, and safety hat.
- Do not alter or adjust any part of the generator that is assembled and supplied by the manufacturer.
- Always follow and complete scheduled engine and generator maintenance.

## CHEMICALS

- Avoid contact with hot fuel, oil, exhaust fumes, and hot solid surfaces.
- Avoid body contact with fuels, oils, and lubricants used in the generator. If swallowed, seek medical treatment

immediately. Do not induce vomiting if fuel is swallowed. For skin contact, immediately wash with soap and water. For eye contact, immediately flush eyes with clean water and seek medical attention.

## NOISE

- Prolonged exposure to noise levels above 68 DBA is hazardous to hearing. Always wear ANSI approved ear protection when operating or working around the generator when it is running.

## ELECTRIC SHOCK PREVENTION

- Never operate the engine in the rain or snow.
- Never touch the machine with wet hands; otherwise, electrical shock will occur.
- Ensure that the generator is grounded to the earth.
- Use a ground (earth) lead with the correct current capacity, and a diameter of 0.12 mm (0.005 in).

- While generator is running, do not touch it with wet hands!

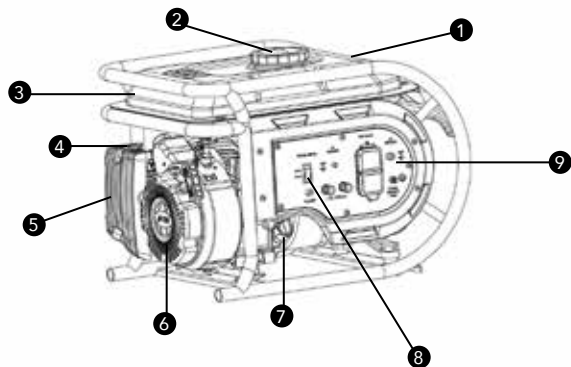
## EXTENSION CORD

If an extension cord (not included) is used, make sure to use only UL approved cords having the correct gauge and length according to the following table:

FEET	AMPS	FEET	AMPS
0-5 ft.	16 amps	15-20 ft.	10 amps
5.1-8 ft.	16 amps	50-100 ft.	16 amps
8.1-12 ft.	14 amps	100-150 ft.	12 amps
12.1-15 ft.	12 amps	150-200 ft.	12 amps

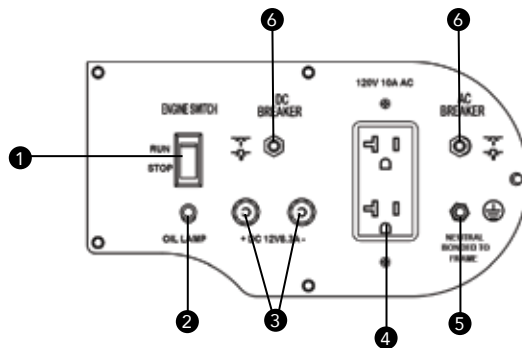
## COMPONENTS

Read this owner's manual before operating your generator. Familiarize yourself with the location and function of the controls and features. Save this manual for future reference.



- |                |                         |
|----------------|-------------------------|
| 1. Handle      | 6. Recoil Starter       |
| 2. Fuel Cap    | 7. Oil Drain Plug       |
| 3. Fuel Tank   | 8. Engine On/Off Switch |
| 4. Choke Lever | 9. Control Panel        |
| 5. Air Filter  |                         |

## CONTROL PANEL



- |   |  |
|---|--|
| <b>1. Engine Switch</b><br>Used to start or stop the generator. | <b>5. Ground Terminal</b><br>Consult an electrician for local grounding regulations. |
| <b>2. Oil Alert Lamp</b><br>Alert indicating low oil.           | <b>6. AC Breaker</b>   |
| <b>3. Terminals</b>   | <b>7. DC Breaker</b>   |
| <b>4. 120V Receptacle</b>                                       |  |

Your generator requires some assembly. This unit ships from our factory without oil. It must be properly service with fuel and oil before operation.

If you have any questions regarding the assembly of your generator or missing parts, call our Customer Care Center at **1-888-896-6881**. Please have your serial number and model number available.

### Remove the Generator from the Shipping Carton

1. Set the shipping carton on a solid, flat surface.
2. Remove everything from the carton except the generator.
3. Carefully cut each corner of the box from top to bottom. Fold each side flat on the ground to provide a surface area.

### PARTS INCLUDED

Check all loose parts against the following list:

#### Other:

- Oil .....0.63 qt. (0.6 L)
- Oil Funnel..... 1
- Spark Plug Socket..... 1



### Add Engine Oil

#### ▲ CAUTION ▲

**Do not attempt to crank or start the engine before it has been properly filled with the recommended type and amount of oil. Damage to the generator as a result of failure to follow these instructions will void your warranty.**

1. Place the generator on a flat, level surface.
2. Remove oil fill cap/dipstick to add oil.
3. Add 0.42 qt (0.4 L) of oil and replace oil fill cap/dipstick.
4. Check engine oil level daily and add as needed.

### Add Fuel

1. Use clean, fresh, regular fuel with a minimum octane rating of 85.
2. DO NOT mix oil with fuel.
3. Clean the area around the fuel cap.
4. Remove the fuel cap.

5. Slowly add fuel to the tank.  
DO NOT overfill. Allow approximately 1/4 inch of space for fuel expansion.
6. Screw on the fuel cap and wipe away any spilled fuel.



#### ⚠ CAUTION ⚠

- Use regular unleaded gasoline with a minimum octane rating of 85.
- Do not mix oil and gasoline.
- Fill tank to approximately 1/4" below the top of the tank to allow for fuel expansion.
- Do not fill fuel tank indoors.
- Do not fill fuel tank when the engine is running or hot.
- Do not overfill the fuel tank.
- Do not light cigarettes or smoke when filling the fuel tank.

#### Grounding

Your generator must be properly connected to an appropriate ground to help prevent electric shock.

#### ⚠ CAUTION ⚠

**Failure to properly ground the generator can result in electric shock.**

Connect a heavy gauge copper or aluminum wire between the generator's ground terminal and an external ground source. Connections should be made by a qualified electrician and must comply with all applicable laws and electrical codes. Improper connections can seriously injure or kill utility workers or other personnel who contact the power lines during a power outage. Improper connections may also seriously harm your generator, persons and property.

#### PRE-OPERATION CHECK

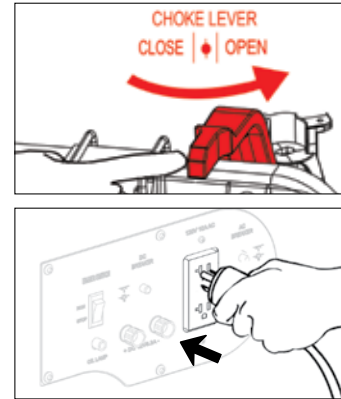
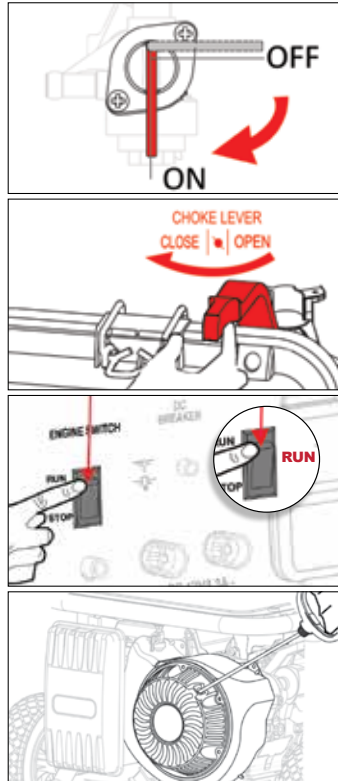
#### ⚠ WARNING ⚠

**People with pacemakers should consult their physician(s) before using this product. Electromagnetic fields in close proximity to a heart pacemaker could cause interference to or failure of the pacemaker.**

1. Check that the engine power switch is in its OFF position.
2. Before the first use, remove the fuel tank cap and fill the fuel tank with unleaded gasoline. When fueling, be sure that the fuel strainer is in place. Replace the fuel tank cap.
3. Check the engine's fuel gauge for the amount of unleaded gasoline in the fuel tank. Refuel if necessary.

**STARTING THE ENGINE**

1. Make certain the generator is on a flat, level surface.
2. Turn the fuel valve to the ON position
3. To start a cold engine, move the choke lever to the CLOSE position. To restart a warm engine, leave the choke lever in the OPEN position.
4. Turn the engine switch to the RUN.
5. *Operate the Recoil Start:*  
Pull the start grip lightly until you feel resistance, then pull briskly. Return the starter grip gently. Pulling the starter grip operates the recoil start to crank the engine.
6. If the choke has been moved to the CLOSE position to start the engine, gradually move it to the OPEN position as the engine warms up.
7. Plug in device(s).

**STOPPING THE ENGINE**

1. Turn OFF all connected devices and unplug all cords.
2. Turn the engine switch to the STOP.
3. Turn the fuel valve lever to the OFF.

When the engine is not in use, leave the fuel valve in the OFF position to prevent carburetor flooding and to reduce the possibility of fuel leakage.

**POWERING 120 VOLT AC TOOL AND EQUIPMENT:**

1. Prior to powering tools and equipment, make sure the generator's rated voltage, and amperage capacity (120V AC@8.3 AMPs) is adequate to supply all electrical loads that the unit will power. If powering exceeds the generator's capacity, it may be necessary to group one or more of the tools and/or equipment for connection to a separate generator.
  2. Once the generator is running, simply connect the power cords of 120 volt AC powered tools and equipment into the 120 volt AC dual outlets.
- i NOTE: The generator features an AC Non-Fuse Thermal Protector to protect the AC circuit in case of an overload. Should an overload occur, the breaker will pop.**
3. Disconnect all electrical powered tools and equipment from the generator's 120 volt AC dual outlets.

4. After the engine and generator have completely cooled, store generator in a safe, clean, dry location (if not already installed).

**⚠ CAUTION ⚠**

**Attempting to power sensitive electronic equipment without the use of an approved line conditioner may cause damage to the equipment.**

**POWERING 120 VOLT DC TOOL AND EQUIPMENT:**

1. Prior to powering tools and equipment, make sure the generator's rated voltage, and amperage capacity (12V DC) is adequate to supply all electrical loads that the unit will power. If powering exceeds the generator's capacity, it may be necessary to group one or more of the tools and/or equipment for connection to a separate generator.
2. Connect the power cord of a 12V DC powered tool or equipment to the DC Terminals.

**⚠ CAUTION ⚠**

**Make sure to connect the positive (+) lead of the power cord to the positive (+) terminal on the generator, and connect the negative (-) lead of the power cord to the negative (-) terminal on the generator.**

**The 12V DC is for battery charging only.**

**⚠ CAUTION ⚠**

- **If an appliance begins to operate abnormally, becomes sluggish, or stops suddenly, turn off the generator engine switch immediately. Then disconnect the appliance and examine it for signs of malfunction.**

**PERIODIC MAINTENANCE**

Safety is an obligation of the owner. Regular maintenance is very important to ensure the best performance and longevity of the your generator. Please see the Table below for recommended maintenance.

**⚠ WARNING ⚠**

**Always make sure the engine power switch is in its 'OFF' position. Disconnect the spark plug wire from the engine. Allow sufficient time for the engine and generator to completely cool before performing any inspections, maintenance, or cleaning.**

Item	Routine	Pre-operation check (Daily)	Initial Month or the first 20 hrs.	Every		
				3 mo. or 50 hrs.	6 mo. or 100 hrs.	12 mo. or 300 hrs.
Spark Plug	<ul style="list-style-type: none"> <li>• Check Condition.</li> <li>• Clean and replace if necessary.</li> </ul>	○		○		
Engine Fuel / Oil Mix	• Check fuel and oil level(s).	○			○	
	• Replace.					
Air Filter	• Clean and replace if necessary.		○	○		
Fuel/Oil Filter	• Clean and replace if necessary.			○		
Valve Clearance	• Check and adjust when engine is cold.				○	
Fuel/Oil Line	• Check fuel/oil hose for cracks or damage. Replace if necessary.					○
Exhaust System	• Clean for leakage. Retighten or replace gasket, if necessary.	○				
Cooling System	• Check for damage.					○
Starting System	• Check recoil starter operation.	○				
Decarbonization	• Check more frequently (than 12mos), if necessary.					○
Fittings / Fasteners	• Check all fittings and fasteners; correct, if necessary.				○	

## INSPECTION, CLEANING AND MAINTENANCE

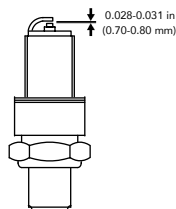
### ⚠ WARNING ⚠

Always make sure the engine power switch is in its 'OFF' position. Disconnect the spark plug wire from the engine and allow sufficient time for the engine and generator to completely cool before performing any inspections, maintenance or cleaning.

## SERVICING THE SPARK PLUG

In order to service the spark plug, you will need a spark plug wrench (commercially available).

1. Remove the spark plug cap.
2. Use a spark plug wrench to remove the spark plug.
3. Visually inspect the spark plug. Discard it if the insulator is cracked or chipped. Clean the spark plug with a wire brush if it is to be reused.



4. Measure the plug gap with a feeler gauge. The gap should be 0.02-0.03in. Correct as necessary by carefully bending the side electrode. The gap should be: 0.70-0.80 mm (0.028-0.031in)
5. Check that the spark plug washer is in good condition.
6. After a new spark plug has been seated by hand, it should be tightened 1/2 turn with a wrench to compress its washer. If a used plug is being reinstalled, it should only required 1/8 to 1/4 turn after being seated.
7. Reinstall the spark plug inspection cover and tighten the cover screw.

**NOTE:** The spark plug must be securely tightened. An improperly tightened spark plug can become very hot and could damage the engine. Never use spark plugs which have an improper heat range. Use only recommended spark plus or equivalent.

## Servicing The Muffler

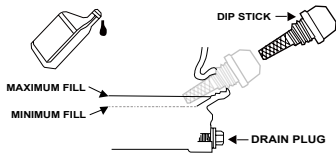
To clean the muffler:

1. Remove the muffler from the engine.
2. Clean the carbon deposits out of the muffler using a wire brush.
3. Check the muffler; replace, if damaged.
4. Reinstall the muffler to the engine.



## Checking/Replacing The Oil

Drain the oil while the engine is still warm to assure rapid and complete draining. The following paragraphs describe how to drain the old oil and replace with new oil:



1. Take out the oil outlet plug.
2. Remove the drain bolt, and drain the oil.
3. Retighten the bolt securely.
4. Refill with the recommended oil and check the level.
5. Close the access door.

**NOTE:** Please dispose of used motor oil in a manner that does not damage the environment. We suggest you take it in a sealed container to your local service station for proper disposal. Do not throw it in the trash or pour it on the ground.

## Servicing The Air Filter

A dirty air cleaner will restrict air flow to the carburetor. To prevent carburetor malfunction, service the air cleaner regularly. Service more frequently when operating the generator in extremely dusty areas.

### ⚠ WARNING ⚠

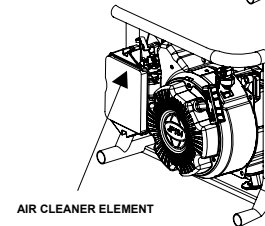
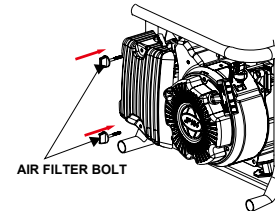
**Using gasoline or flammable solvent to clean the filter element can cause a fire or explosion. Use only soapy water or nonflammable solvent.**

**NOTE:** Never run the generator without the air filter; rapid engine wear may occur.

1. Unsnap the clips, and remove the air filter cover.
2. Remove the sponge element from the air filter cover.
  - (a) Wash the sponge element in a solution of household detergent and warm water, then rinse thoroughly, or wash in nonflammable or high flash point solvent.

- (b) Allow the sponge element to dry thoroughly.
- (c) Soak the sponge element in clean engine oil and squeeze out the excess oil. The engine will smoke during initial startup if too much oil is left in the sponge element.

3. Reinstall the sponge element to the air filter cover.

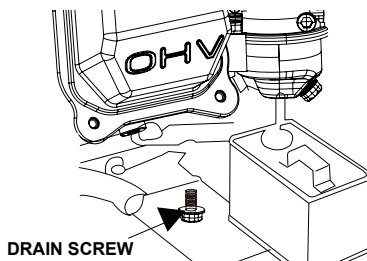


## STORING YOUR GENERATOR

**NOTE:** Long-term storage of your machine will require some preventive procedures to guard against deterioration. Please use these storage recommendations if you plan on storing your generator for more than one month.

To store your generator, follow the instructions below:

1. Ensure that the storage area is free of excessive humidity and dust.
2. Drain all fuel from the engine (including fuel/oil tank, fuel lever, and carburetor).
3. To drain the fuel:
  - (a) Turn fuel valve to ON and then loosen the carburetor drain screw. Drain the gasoline from the carburetor and fuel tank into a suitable container.
  - (b) Turn the fuel lever to OFF.
  - (c) Tighten the carburetor screw, close the fuel valve lever and access door.



4. Change the engine oil.
5. Remove the spark plug and pour about a tablespoon of clean engine oil into the cylinder. Crank the engine several revolutions to distribute the oil, then reinstall the spark plug.
6. Slowly pull the starter grip until resistance is felt. At this point, the piston is coming up on its compression stroke and both the intake and exhaust valves are closed.
7. Storing the engine in this position will help to protect it from internal corrosion.

## INSTALLATION

**NOTE:** Prior to powering tools and equipment, make sure the generator's rated voltage, wattage and amperage capacity is adequate to supply all electrical loads that the unit will power. If powering exceeds the generator's capacity, it may be necessary to group one or more of the tools and/or equipment for connection to a separate generator.

Electrical and other permits may be required for the installation of emergency power systems. Investigate your local building and electrical codes before installing this unit. Installation must be completed by licensed contractors.

**▲ WARNING ▲**

**Use care and the proper lifting or hoisting equipment when moving it to the installation location. Always connect hoist lines to the frame of the generator.**

## TROUBLESHOOTING GUIDE

The following troubleshooting guide is recommended for basic or common problems; if there's an issue with the generator that is not listed, **please call 1-888-896-6881**.

**▲ WARNING ▲**

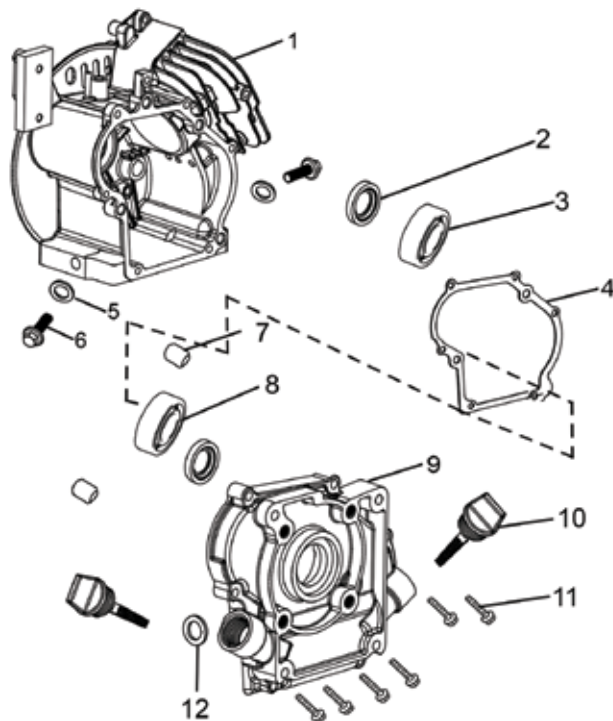
**Always make sure the engine power switch is in its 'OFF' position. Disconnect the spark plug wire from the engine and allow sufficient time for the engine and generator to completely cool before performing any inspections, maintenance, or cleaning.**

Problem	Probable Cause	Solution
Engine will not start or starts and runs rough.	1. No fuel/oil	1. Add fuel/oil
	2. Stale fuel	2. Drain fuel tank; fill with fresh fuel/oil mix.
	3. Spark plug wire (cap) disconnected	3. Install spark plug cap over spark plug.
	4. Faulty/bad spark plug	4. Check/replace spark plug.
	5. Fuel not reaching carburetor	5. Clean fuel sediment cup.
	6. Dirty air cleaner	6. Clean or replace air cleaner.
Engine suddenly stops.	1. No fuel/oil (50:1)	1. No fuel/oil (50:1)
No power at AC receptacle.	1. Electrical overload on generator	1. Check all circuit breakers for a "tripped" position. Reduce electrical load on circuit, wait 3 minutes and then push to reset circuit breaker.
	2. Poor connection or defective cord set	2. Check cord connection. Replace defective cord set.
	3. Connected electrical appliance/equipment is defective	3. Check electrical appliance/equipment from the generator. Have appliance serviced by qualified repair facility.

Dimensions	Length	16.5 in.
	Width	15 in.
	Height	13.8 in.
	Weight	63 lbs
Engine	Engine Type	Air cooled 4-stroke
	Displacement	98cc
	Oil Capacity	0.42 quart (0.4 liter)
	EPA Approved	Yes
	Noise Level	65 dB
Fuel	Type	Unleaded Gasoline
	Capacity	1.32 Gallons
	Running Time	9 hours (approx.) @ 1/2 Load
	Fuel Gauge	Included
Weight	Approximate Weight	63 lbs.

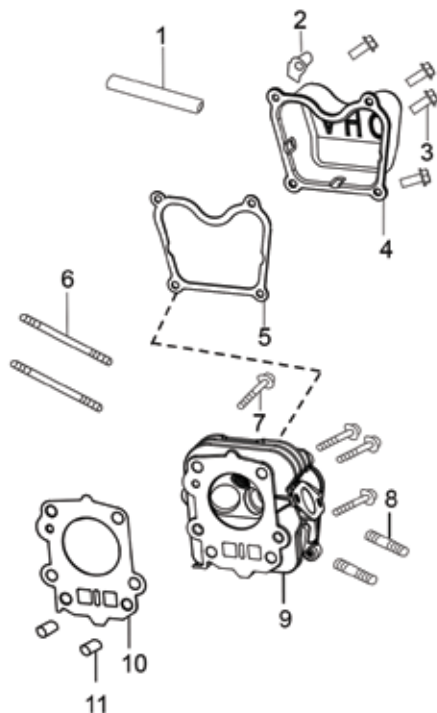
# NOTES


## CRANKCASE ASSY

**A**

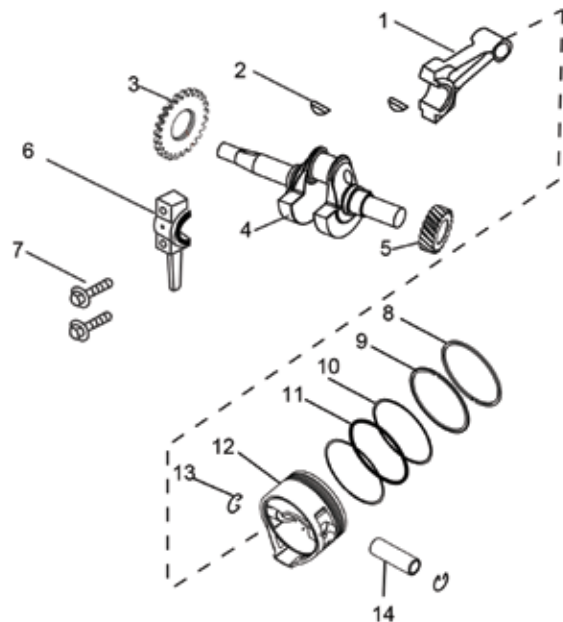
APA #	DESCRIPTION	QTY
G1800-A-01-JD	CRANKCASE ASSY	1
G1800-A-02-JD	OIL SEAL	2
G1800-A-03-JD	BEARING 6203	1
G1800-A-04-JD	CRANKCASE GASKET	1
G1800-A-05-JD	DRAIN BOLT	2
G1800-A-06-JD	WASHER	2
G1800-A-07-JD	DOWEL PIN	2
G1800-A-08-JD	BEARING 6203	1
G1800-A-09-JD	CRANKCASE COVER	1
G1800-A-10-JD	OIL LEVEL CAP ASSY.	2
G1800-A-11-JD	FLANGE BOLT	6
G1800-A-12-JD	"O" RING	2

## CYLINDER HEAD

**B**

APA PART #	DESCRIPTION	QTY
G1800-A-01-JD	PIPE	1
G1800-B-02-JD	WIRE BOARD	1
G1800-B-03-JD	FLANGE BOLT	4
G1800-B-04-JD	HEAD COVER COMP	1
G1800-B-05-JD	HEAD COVER COMP	1
G1800-B-06-JD	BOLT M6 X 90	2
G1800-B-07-JD	FLANGE BOLT	4
G1800-B-08-JD	BOLT M6 X 90	2
G1800-B-09-JD	CYLINDER HEAD ASSY.	1
G1800-B-10-JD	CYLINDER HEAD GASKET	1
G1800-B-11-JD	DOWEL PIN	2

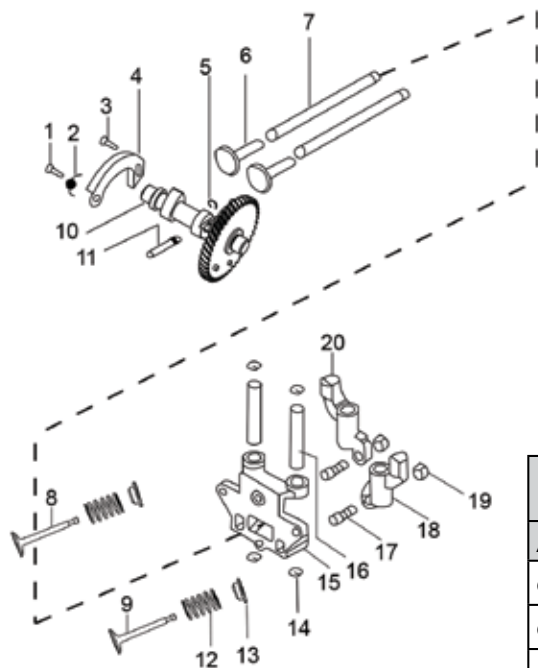
## CRANKSHAFT PISTON



C		
APA PART #	DESCRIPTION	QTY
G1800-C-01-JD	CONNECTING ROD	1
G1800-C-02-JD	SEMICIRCLE KEY	2
G1800-C-03-JD	GEAR	1
G1800-C-04-JD	CRANKSHAFT ASSY	1
G1800-C-05-JD	PINION	1
G1800-C-06-JD	CONNECTING ROD COVER	1
G1800-C-07-JD	FLANGE BOLT	1
G1800-C-08-JD	FIRST PISTON RING	2
G1800-C-09-JD	SECOND PISTON RING	1
G1800-C-10-JD	OIL RING GUIDE SLOT	1
G1800-C-11-JD	SPRING	1
G1800-C-12-JD	PISTON	1
G1800-C-13-JD	PISTON PIN CLIP	2
G1800-C-14-JD	PISTON PIN	1



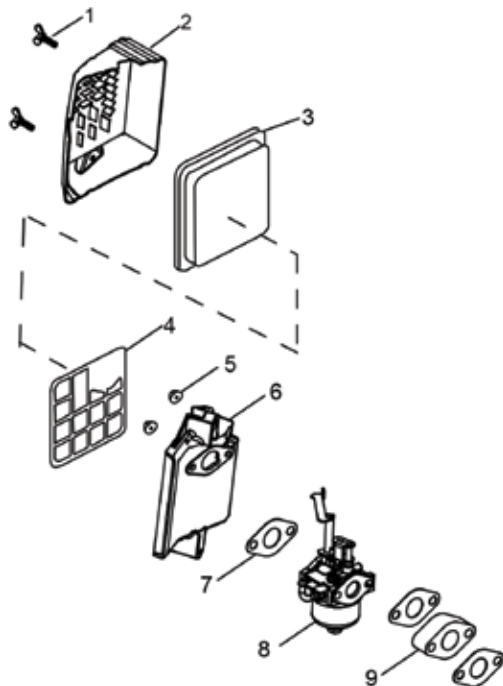
## CAMSHAFT



D		
APA PART #	DESCRIPTION	QTY
G1800-D-01-JD	PIN A	1
G1800-D-02-JD	SPRING	1
G1800-D-03-JD	PIN B	1

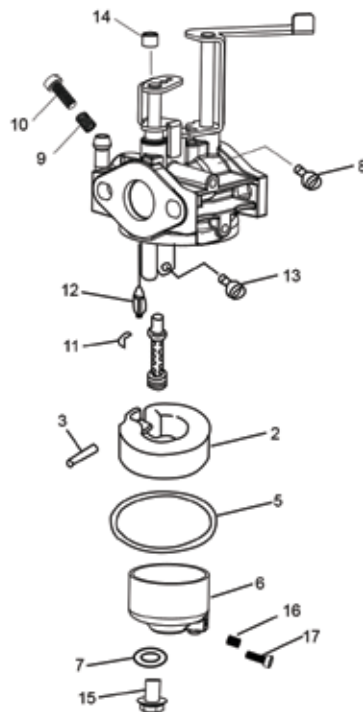
G1800-D-04-JD	SLIDE BLOCK	1
G1800-D-05-JD	LOCK RING	1
G1800-D-06-JD	VALVE LIFTER	2
G1800-D-07-JD	PUSH ROD	2
G1800-D-08-JD	INTAKE VALVE	1
G1800-D-09-JD	EXHAUST VALVE	1
G1800-D-10-JD	CAMSHAFT	1
G1800-D-11-JD	PIN	1
G1800-D-12-JD	VALVE SPRING	2
G1800-D-13-JD	SPRING RETAINERS	2
G1800-D-14-JD	ROCKER RING	4
G1800-D-15-JD	ROCKER SEAT	1
G1800-D-16-JD	ROCKER ARM SHAFT	2
G1800-D-17-JD	ADJUSTERS SCREW	2
G1800-D-18-JD	EXHAUST ROCKER	1
G1800-D-19-JD	NET M6	2
G1800-D-20-JD	INTAKE ROCKER	1

## AIR CLEANER

**E**

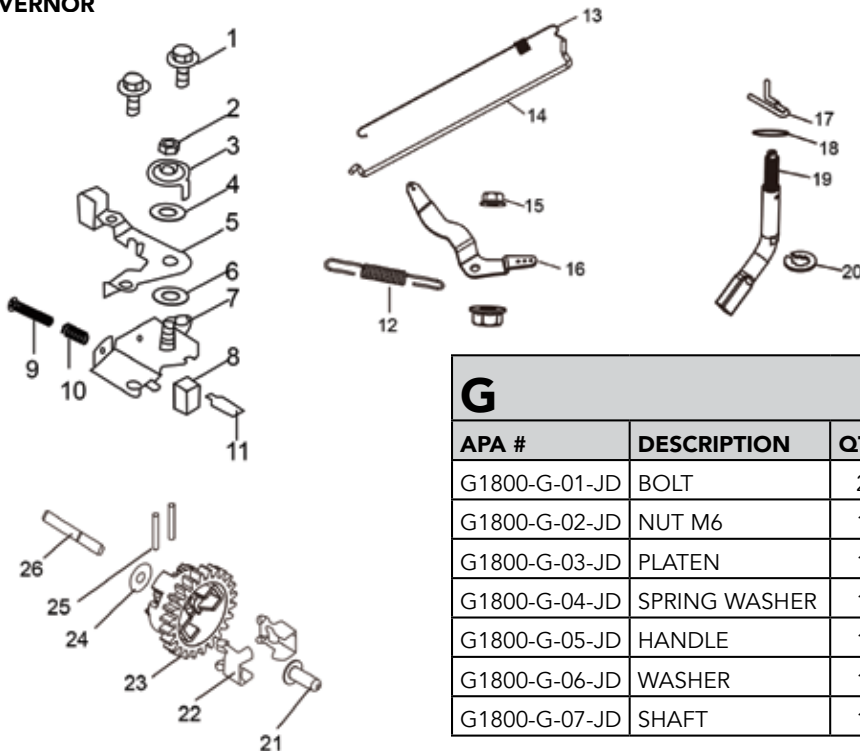
APA PART #	DESCRIPTION	QTY
G1800-E-01-JD	BOLT	2
G1800-E-02-JD	FILTER COVER	1
G1800-E-03-JD	AIR CLEANER ELEMENT	1
G1800-E-04-JD	HOLD RACK	1
G1800-E-05-JD	NET M6	2
G1800-E-06-JD	FILTER SEAT	1
G1800-E-07-JD	GASKET	3
G1800-E-08-JD	CARBURETOR ASSY.	1
G1800-E-09-JD	CARBURETOR PIPE	1

## CARBURETOR

**F**

APA PART #	DESCRIPTION	QTY
G1800-F-01-JD	CARBURETOR ASSY	1
G1800-F-02-JD	FLOAT	1
G1800-F-03-JD	FLOAT PIN	1
G1800-F-04-JD	MAIN NOZZLE	1
G1800-F-05-JD	GASKET	1
G1800-F-06-JD	FLOAT CHAMBER BODY	1
G1800-F-07-JD	GASKET	1
G1800-F-08-JD	FLOAT CHAMBER BODY	1
G1800-F-09-JD	GASKET	1
G1800-F-10-JD	BOLT	1
G1800-F-11-JD	SPRING	1
G1800-F-12-JD	PILOT SCREW	1
G1800-F-13-JD	NEEDLE ASSEMBLY	1
G1800-F-14-JD	MAIN JET	1
G1800-F-15-JD	PILOT JET	1
G1800-F-16-JD	BOLT	1
G1800-F-17-JD	SPRING	1
G1800-F-18-JD	BOLT	1

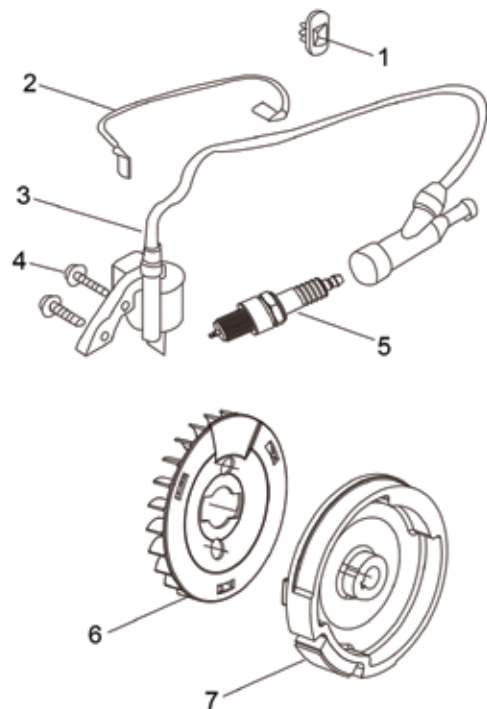
## GOVERNOR



G		
APA #	DESCRIPTION	QTY
G1800-G-01-JD	BOLT	2
G1800-G-02-JD	NUT M6	1
G1800-G-03-JD	PLATEN	1
G1800-G-04-JD	SPRING WASHER	1
G1800-G-05-JD	HANDLE	1
G1800-G-06-JD	WASHER	1
G1800-G-07-JD	SHAFT	1

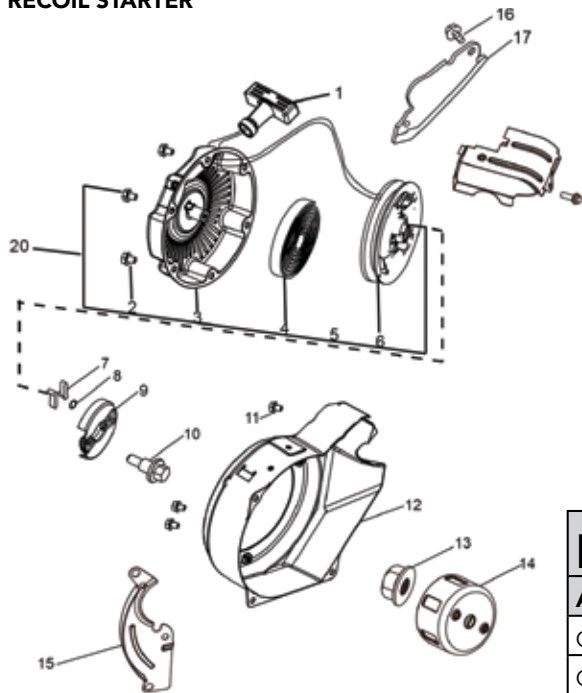
G1800-G-08-JD	INSULATION FRAME	1
G1800-G-09-JD	BOLT	1
G1800-G-10-JD	SPRING	1
G1800-G-11-JD	SOCKET	1
G1800-G-12-JD	SPRING	1
G1800-G-13-JD	SPRING	1
G1800-G-14-JD	LINK ROD	1
G1800-G-15-JD	NUT M6	2
G1800-G-16-JD	GOVERNOR ARM	1
G1800-G-17-JD	LOCK RING	1
G1800-G-18-JD	WASHER	1
G1800-G-19-JD	GOVERNOR SLIDER	1
G1800-G-20-JD	LOCK RING	1
G1800-G-21-JD	GOVERNOR SLIDER	1
G1800-G-22-JD	FLYWEIGHT	2
G1800-G-23-JD	ADJUST SPEED GEAR	1
G1800-G-24-JD	WASHER	1
G1800-G-25-JD	FLYWHEEL SHAFT	2
G1800-G-26-JD	ADJUST PEED GEAR SHAFT	1

## IGNITION FLYWHEEL

**H**

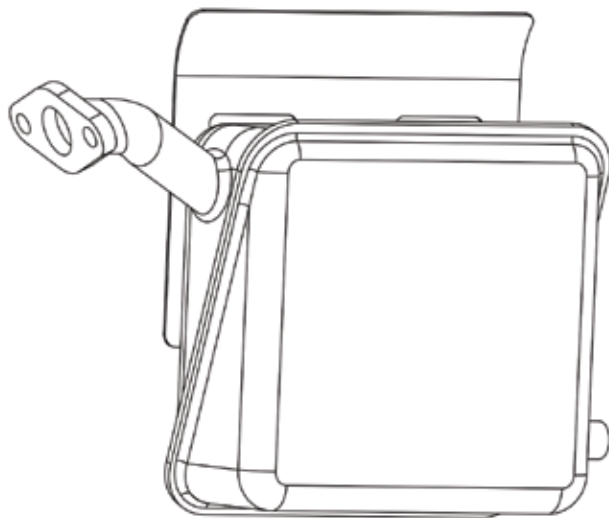
APA PART #	DESCRIPTION	QTY
G1200-H-01-JD	STRING FRAME	1
G1200-H-02-JD	STOPPING PROTECTIVE WIRES	1
G1200-H-03-JD	IGNITION COIL ASSY.	1
G1200-H-04-JD	FLANGE BOLT	2
G1200-H-05-JD	SPARK PLUG	1
G1200-H-06-JD	FAN	1
G1200-H-07-JD	FLYWHEEL	1

## RECOIL STARTER



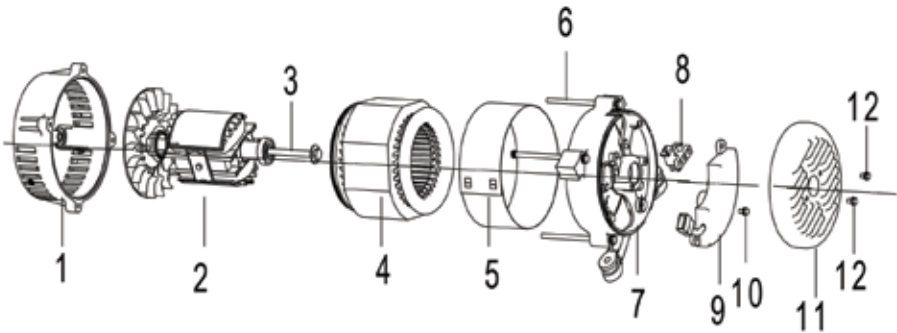
APA #	DESCRIPTION	QTY
G1200-I-01-JD	HANDLE	1
G1200-I-02-JD	BOLT	3

G1200-I-03-JD	RECOIL STARTER CASE	1
G1200-I-04-JD	STARTER SPRING	1
G1200-I-05-JD	RECOIL STARTER ROPE	1
G1200-I-06-JD	DRUM SHEAVE	1
G1200-I-07-JD	DRIVE PAWLS	1
G1200-I-08-JD	CLIP	2
G1200-I-09-JD	DRIVE PLATE	1
G1200-I-10-JD	PIN	1
G1200-I-12-JD	FLYWHEEL COVER	4
G1200-I-13-JD	NUT	1
G1200-I-14-JD	STARTER PULLEY	1
G1200-I-15-JD	BEHIND COVER	1
G1200-I-16-JD	BOLT	2
G1200-I-17-JD	FRONT COVER	1
G1200-I-18-JD	AIR SHROUD	1
G1200-I-19-JD	BOLT	1
G1200-I-20-JD	RECOIL STARTER ASSY	1

**MUFFLER SYSTEM ASSY.****N**

APA PART #	DESCRIPTION	PART #
G1200-N-01-JD	MUFFLER BODY	JF3000-N-01

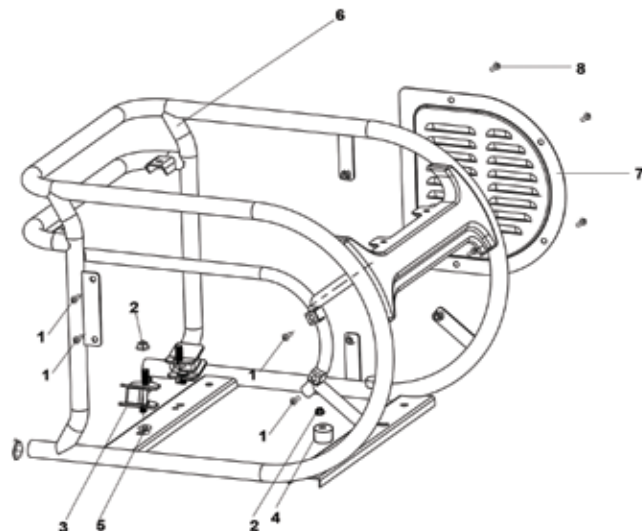
MAGNETO



J		
APA #	DESCRIPTION	QTY
G1200-J-01-JD	FRONT COVER	1
G1200-J-02-JD	ROTOR	1
G1200-J-03-JD	BOLT (M8 X 185)	1
G1200-J-04-JD	STATOR	1
G1200-J-05-JD	STATOR	1
G1200-J-06-JD	BOLT (M6 X 105)	4
G1200-J-07-JD	REAR COVER	1
G1200-J-08-JD	BUSH ASSY	1
G1200-J-09-JD	AVR.	1
G1200-J-10-JD	TAPPING SCREW	2
G1200-J-11-JD	GENERATOR COVER	1
G1200-J-12-JD	BOLT	2

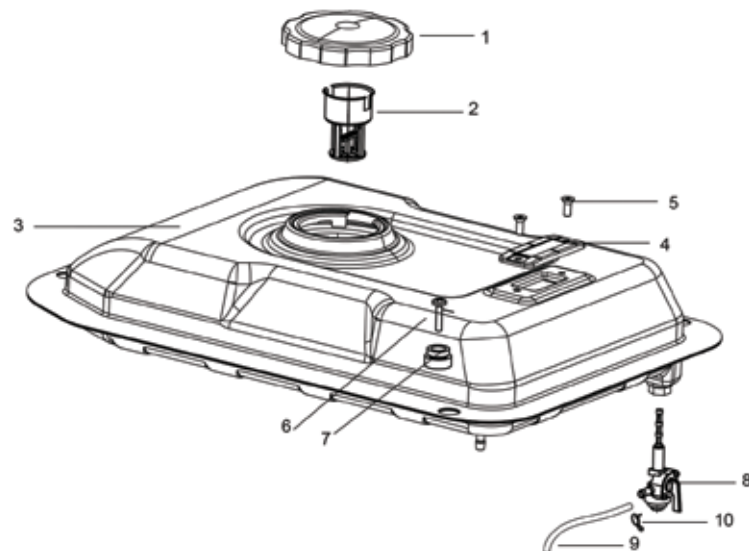


## FRAME COMP ASSY

**K**

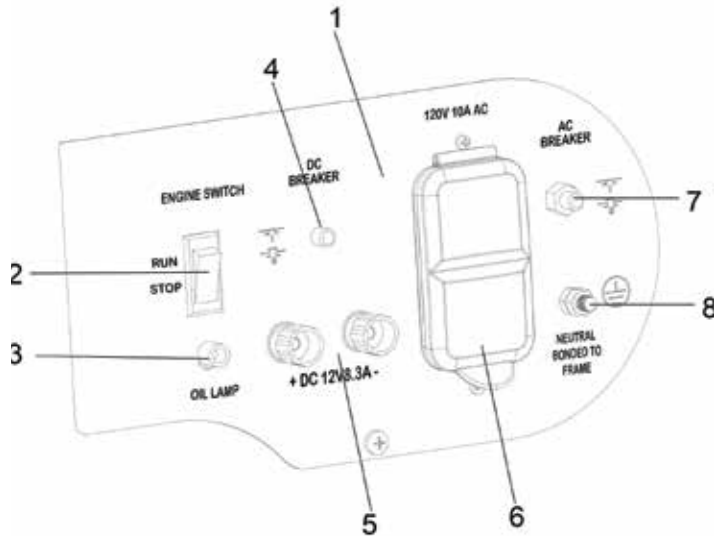
APA PART #	DESCRIPTION	QTY
G1200-K-01-JD	FLANGE BOLT (M6 X 12)	4
G1200-K-02-JD	FLANGE NUT (M8)	4
G1200-K-03-JD	SPRING RETAINER	2
G1200-K-04-JD	PLATEN SPRING	2
G1200-K-05-JD	STARTER RATCHET	4
G1200-K-06-JD	RETURN SPRING	1
G1200-K-07-JD	RECOIL STARTER REEL	1
G1200-K-08-JD	RECOIL STARTER SPRING	4

## TANK



L		
APA #	DESCRIPTION	QTY
G1200-L-01-JD	FUEL FILLER CAP COMP	1
G1200-B-02-JD	FUEL FILTER	1
G1200-B-03-JD	FUEL TANK COMP	1
G1200-B-04-JD	FUEL RESTRAIN VALE ASSY	1
G1200-B-05-JD	FLANGE BOLT	2
G1200-B-06-JD	FLANGE BOLT	4
G1200-B-07-JD	CONTROL BOX RUBBER	4
G1200-B-08-JD	OVERFLOW VALVE	1
G1200-B-09-JD	FUEL TUBE	1
G1200-B-10-JD	TUBE CLIP	1

## CONTROL BOX ASSY.



## Q

APA PART #	DESCRIPTION	PART #
G1200-Q-01-JD	CONTROL PANEL COMP	
G1200-Q-02-JD	ENGINE SWITCH ASSY.	
G1200-Q-03-JD	OIL ALERT LAM	
G1200-Q-04-JD	DC BREAKER	
G1200-Q-05-JD	TERMINAL	
G1200-Q-06-JD	120V RECEPTACLE	
G1200-Q-07-JD	AC BREAKER	
G1200-Q-08-JD	EARTH TERMINAL SCREW	

# NOTES


# NOTES


## CONSUMER INFORMATION

MODEL NO.	<input type="text"/>
SERIAL NO.	<input type="text"/>
DATE OF PURCHASE	<input type="text"/>
PLACE OF PURCHASE	<input type="text"/>

Record your generator's model number, serial number, date of purchase and place of purchase in the spaces provided. Have this information available when ordering parts and when making technical or warranty inquiries.

Have questions or need assistance?

Do not return this product to the store!

**WE ARE HERE TO HELP!**

Call our Customer Care Center Toll Free at:

**1-888-896-6881**

## LIMITED WARRANTY

All Power warrants to the original purchaser who uses the product in a consumer application (personal, residential or household usage) that all products covered under this warranty are free from defects in material and workmanship for one year from the date of purchase.

All products covered by this limited warranty which are used in commercial applications (i.e. income producing) are warranted to be free of defects in material and workmanship for 90 days from the date of original purchase. Products covered under this warranty include air compressors, air tools, service parts, pressure washers and generators.

All Power will repair or replace, at All Power sole option, products or components which have failed within the warranty period. Service will be scheduled according to the normal work flow and business hours at the service center location, and the availability of replacement parts. All decisions of All Power with regard to this limited warranty shall be final.

This warranty gives you specific legal rights, and you may also have other rights which vary from state to state.

### RESPONSIBILITY OF ORIGINAL PURCHASER (initial User):

To process a warranty claim on this product, DO NOT return item to the retailer. The product must be evaluated by an Authorized Warranty Service Center. For the location of the nearest Authorized Warranty Service Center call 888.896.6881.

### Retain original cash register sales receipt as proof of purchase for warranty to work.

Use reasonable care in the operation and maintenance of the product as described in the Owner's Manual(s).

Deliver or ship the product to the Authorized Warranty Service Center. Freight costs, if any must be paid by the purchaser.

If the purchaser does not receive satisfactory results from the Authorized Warranty Service Center, the purchaser should contact All Power.

### THIS WARRANTY DOES NOT COVER:

- Merchandise sold as reconditioned, used as rental equipment, or floor or display models.
- Merchandise that has become damaged or inoperative because of ordinary wear, misuse, cold, heat, rain, excessive humidity, freeze damage, use improper chemicals, negligence, accident, failure to operate the product in accordance with the instructions provided in the Owner's Manual(s) supplied with the product, improper maintenance, the use of accessories or attachments not recommended by All Power, or unauthorized repair or alterations.
- Repair and transportation costs of merchandise determine not to be defective.

- Costs associated with assembly, required oil, adjustments or other installation and start-up costs.
- Expendable parts or accessories supplied with the product which are expected to become inoperative or unusable after a reasonable period of use.
- Merchandise sold by All Power which has been manufactured by and identified as the product of another company, such as gasoline engines. The product manufacturer's warranty, if any, will apply.
- ANY INCIDENTAL, INDIRECT OR CONSEQUENTIAL LOSS, DAMAGE, OR EXPENSE THAT MAY RESULT FROM ANY DEFECTS, FAILURE OR MALFUNCTION OF THE PRODUCT IS NOT COVERED BY THIS WARRANTY. Some states do not allow the exclusion, so it may not apply to you.
- IMPLIED WARRANTIES, INCLUDING THOSE OF MERCHANTABILITY OR FITNESS FOR A PARTICULAR PURPOSE, ARE LIMITED TO ONE YEAR FROM THE DATE OF ORIGINAL PURCHASE. Some states do not allow limitations on how long an implied warranty lasts, so the above limitations may not apply to you.

